



HIBAR
SYSTEMS LIMITED

5H SERIES
PRECISION
CHECK VALVE
DISPENSING PUMPS

The **NEW** Hibar 5H Series Check Valve style Dispensing Pumps are ideally suited for low to medium viscosity applications in technical, food, cosmetic and pharmaceutical industries. Dispensing accuracies of $\pm 1/2\%$ or better can be easily maintained.



Maximum 2.0 L
Dispense Volume

5H Series Check Valve Pump Features:

- * High quality Stainless Steel construction.
- * Integrated check valves handle fluids with viscosities up to 15,000 cps. and containing no solids.
- * Easy to disassemble, clean and maintain.
- * Compact footprint for easy mounting.
- * Dispensing accuracies of up to $\pm 1/2\%$ or better.
- * Precise dispense volume and speed control via adjustment of the built-in micrometers.
- * Easy integration with virtually any automated filling equipment.
- * Low maintenance and long service life.
- * Wide range of fill nozzles & accessories are available to suit specific applications.

Servomotor driven models are also available - Consult Hibar for details.

HEAD OFFICE:
35 POLLARD STREET
RICHMOND HILL, ONTARIO
CANADA L4B1A8

TEL: 905-731-2400
FAX: 905-731-6035

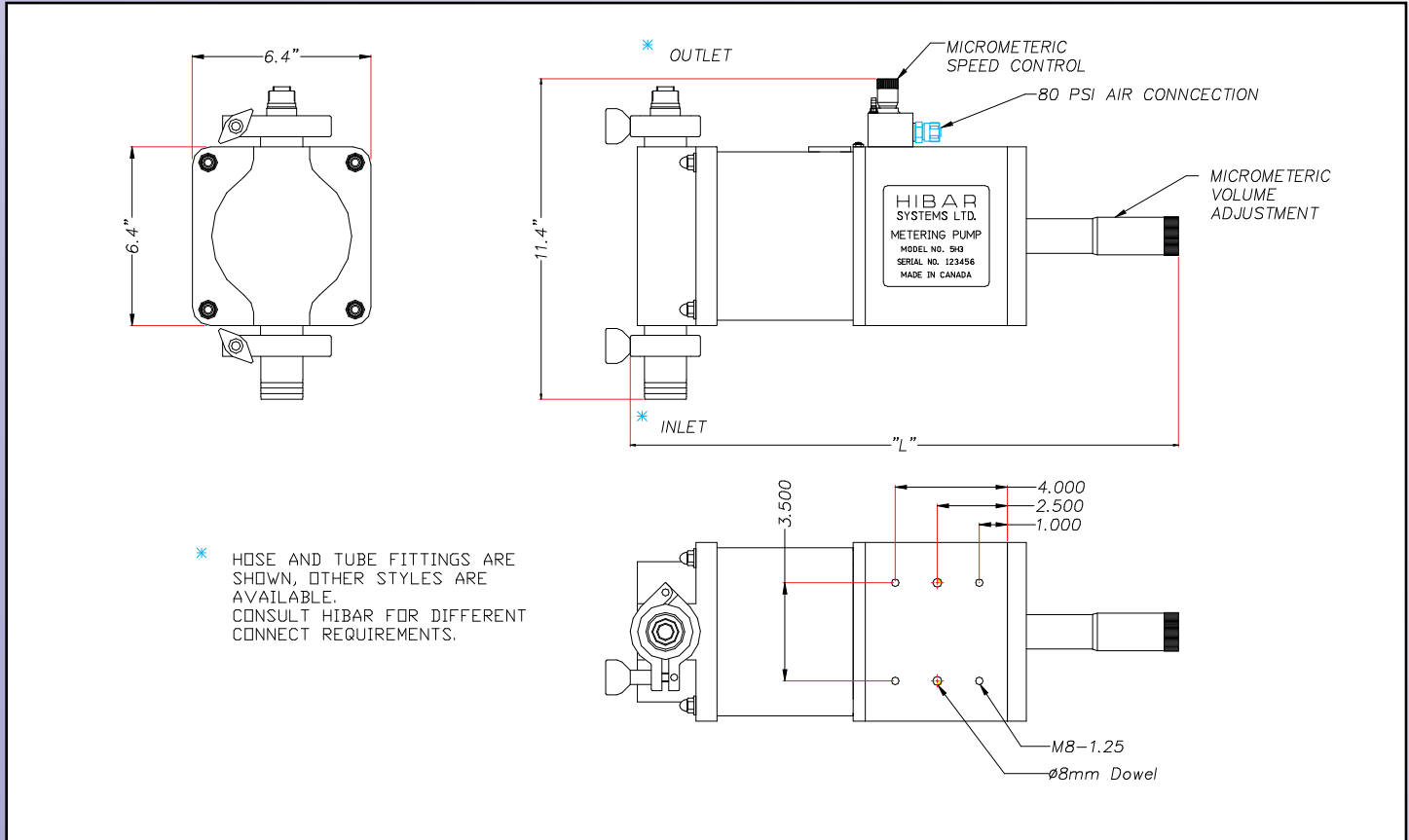
"The Liquid Dispensing Specialists"

WEB: www.hibar.com
EMAIL: sales@hibar.com



HIBAR
SYSTEMS LIMITED

5H Check Valve Pump Dimensions:



5H Series Check Valve Pump Specifications:

MODEL	5H-C3-1000	5H-C3-2000
MAX DISPENSE VOLUME (ml)	1000	2000
PLUNGER DIAMETER (IN)	5 -1/8	5 -1/8
MAXIMUM STROKE (IN)	3.0	6.0
MAX CYCLE RATE (CPM)	30	15
FLUID VISCOSITY (cps)	Up to approximately 15,000cps. For higher viscosities consult Hibar.	
DISPENSE VOLUME CONTROL	Micrometer style volume adjustment	
PRINCIPLE OF OPERATION	Positive Displacement with integrated check valves	
STANDARD WETTED MATERIALS	316 Stainless Steel, Teflon, Kynar, EP Orings - others available upon request	
PRODUCT INLET FITTINGS	1-1/2" Hose Style - others available upon request	
PRODUCT OUTLET FITTINGS	3/4" Tube Style - others available upon request	
AIR SUPPLY	80 psi supply pressure	
DISPENSE ACCURACY	± 1/2% or better	
WEIGHT (LB)	60	64
DIMENSION "L" (IN)	19.5	25.5

All specifications are subject to change without notice.